



Modular holiday house  
APUS



## The standard of the house

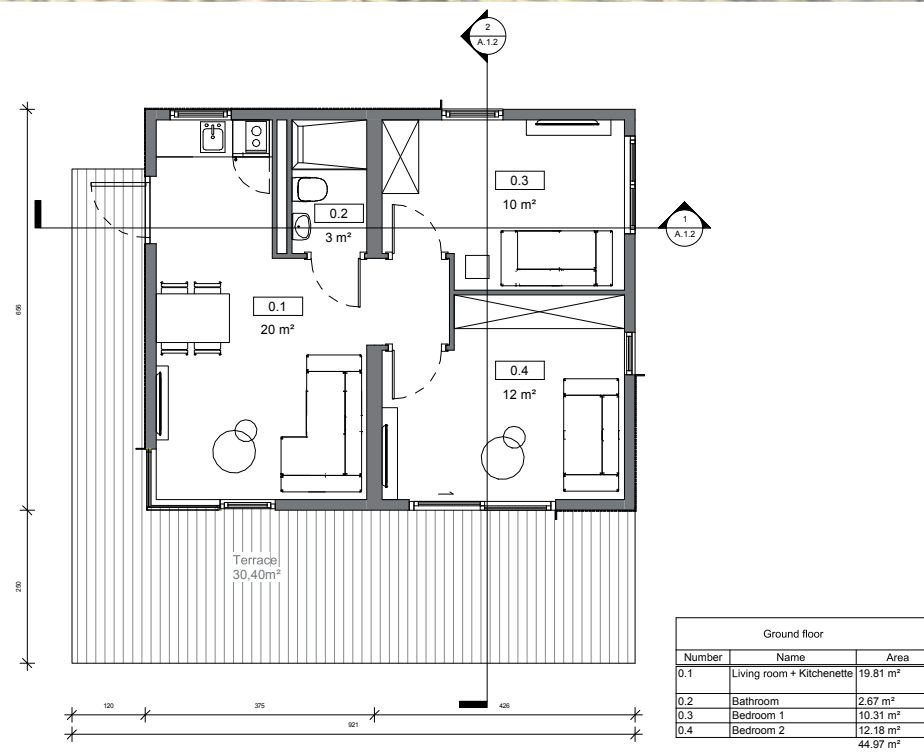
|                   |                      |
|-------------------|----------------------|
| Usable area       | 44,97 m <sup>2</sup> |
| Building area     | 53 m <sup>2</sup>    |
| Width             | 6,56 m               |
| Length            | 8,1 m                |
| Height            | 3,7 m                |
| Number of storeys | 1                    |

### Functional arrangement:

- Living room
- Kitchenette
- 2 Bedrooms
- Bathroom



|                    |   |  |
|--------------------|---|--|
| OUTSIDE            | Elevation   | composite board  |
|                    | Balcony doors   | PVC, double glazing (additional: triple glazing)                     |
|                    | Front door  | PVC, double glazing (additional: triple glazing)                     |
| Terrace            | the offer does not include the execution of an external terrace (to be made individually by the investor) |  |
|                    | Walls   | covered with plywood or paneling, insulated with polystyrene or wool |
| INSIDE             | Floor   | ready for the cladding   |
| BATHROOM           | Water and sewage installation   | prepared for white assembly  |
|                    | Heating   | bathroom radiator  |
| TECHNICAL ELEMENTS | Installation  | with accessories (switches, sockets) without fittings                |
|                    | Technical   | prepared for Wi-Fi support   |
|                    | Ventilation   | gravity ventilation  |
|                    | Heating   | infrared heating   |





# Discover the advantages of modular construction:

## 1. Speed, punctuality and a hundred-year warranty

These are the undoubted advantages of modular construction. Our technology allows for faster implementation of the investment. The first modules can be delivered to the Investor's construction site after 2 months from the date of project approval. We have our own warehouse of building materials and we work in a professional, closed hall, which allows us to fully meet the deadlines we declare for execution of orders and investment costs.

## 2. Precision and quality

Due to the fact that our buildings are built from scratch in the production hall in the QMODULAR factory, we are independent of the weather conditions, which often affect the quality of the work performed. We work in sterile conditions. We use high-quality, certified building materials. We employ a team of specialists with many years of experience. Internal standards and quality control allow the product to be checked at every stage of production so that it meets the stringent requirements of our customers.

## 3. Ecology “before”

Focusing the production attention in one place and optimizing the production material allows to reduce the amount of construction waste produced, thus reducing the costs of their disposal.

We change the way of thinking about building real estate.

## 4. Ecology “after”

At QMODULAR, we produce energy-efficient buildings. We strive to produce zero-energy buildings, i.e. with zero net energy consumption and zero carbon dioxide emissions per year. Thus, we contribute to the lower consumption of conventional energy.

## 5. Flexibility

Our technology allows us to adapt most traditional projects to modular construction. We provide a comprehensive service that will allow you to transform a traditional building into a modular building, and expand it with new modules in the future. We strictly follow the health and safety rules. The prefabrication process takes place in a large production hall, which reduces the risk of accidents at the customer's construction site. Greater responsibility rests on us - the investor can rest easy.

## 7. A team of specialists

Design, welding, prefabrication, quality control, assembly - we do not need subcontractors. The team of qualified professionals deals with the product comprehensively. Coordination and management of each ordered construction investment is solely the responsibility of QMODULAR.