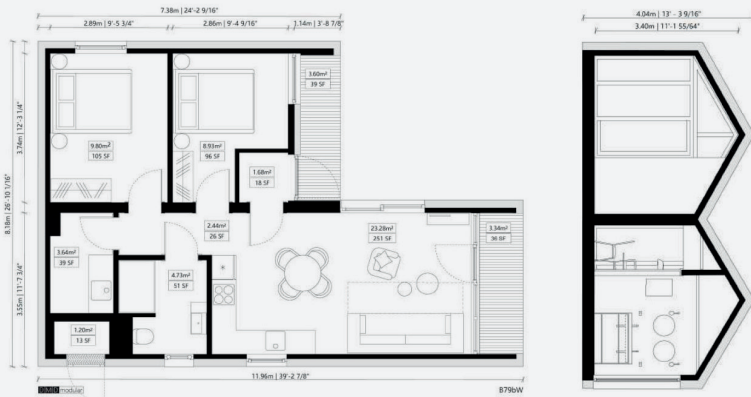


Modular holiday house  
B79bW



## SMART HOUSE B79BW

Dimensions 8,18 x 11,96 x 4,04 m<sup>2</sup>  
 Building Area (m2) 78.57 m<sup>2</sup>  
 Useable area 62.63 m<sup>2</sup>



| room                  | area   m <sup>2</sup> | room             | area   m <sup>2</sup> |
|-----------------------|-----------------------|------------------|-----------------------|
| living room + kitchen | 23.28 m <sup>2</sup>  | utility room     | 3.64 m <sup>2</sup>   |
| hall                  | 2.43 m <sup>2</sup>   | usable area      | 54.49 m <sup>2</sup>  |
| bathroom              | 4.73 m <sup>2</sup>   | + technical room | 1.20 m <sup>2</sup>   |
| entrance              | 1.68 m <sup>2</sup>   | + loggia 1       | 3.60 m <sup>2</sup>   |
| bedroom 1             | 9.80 m <sup>2</sup>   | + loggia 2       | 3.34 m <sup>2</sup>   |
| bedroom 2             | 8.93 m <sup>2</sup>   | total area       | 62.63 m <sup>2</sup>  |

## SMART HOUSE B79V

|              |  |   |   |
|--------------|--|---|---|
| <b>B79bW</b> | Dimensions<br><b>8,18 x 11,96 x 4,04 m</b> | Building area<br><b>78.57 m<sup>2</sup></b> | Internal area<br><b>62.63 m<sup>2</sup></b> |
| 5*2          | 3  | 1   | 1   |
| gable roof   | facade:<br>-wood<br>-steel                 | all-year product                            | 2   |

**Smart House B79V** is an all-year house, designed in modular technology and based on two frames. Full-size kitchen, convenient bathroom and three bedrooms will guarantee comfort to every family. Two terraces giving you extended leisure space outside. **This is the house for those who are the most demanding.**



# Why the Smart Living series?:

## 1. Short production period

High degree of prefabrication – 99% of the work is carried out in the factory –which means a fully finished and furnished unit delivered to you within a few weeks (between 3 and 5 weeks onto site).

## 2. Mobility and ease of assembly

The mobility of the product is its additional advantage. Our modular system and steel structure make the unit easy to disassemble and move it to another location, making it fully relocatable. That allows you to use the unit in various locations. Each unit is equipped with transport hooks that can be used repeatedly. Assembly of the modules is very easy and takes only a few hours. You can do it by yourself (with our technical support) or leave it to DMD.

## 3. Durability of the structure

cold-formed steel, type S355, of indisputable durability.

## 4. Ecological parameters

Our products are environmentally friendly and energy efficient. We use building materials production and use of which does not affect the environment- for example MFP boards that do not emit formaldehydes or mineral wool as thermal insulation. The roof is covered with recyclable steel sheets used also on the facades along with natural wood. Our products ensure healthy living conditions and comfort of use.

We change the way of thinking about building real estate.

## 5. Design and Aesthetic cohesion

Our products are designed by the team of experienced architects. The units allow the completion of aesthetically coherent housing complexes based on various products from our portfolio.

## 6. Guarantee of quality

We select durable, high-quality materials, which is reflected by our warranty conditions (with an option of further extension).

- We do not sell visualisations: we sell proven, tested, realised objects!
- We only use plasterboard taped and filled to all of our product offering the highest standard of finishing, HDF board and other wood-based boards are not part of our finished design.
- We do not cover the connections between ceilings and walls with mouldings – all connections are invisible – walls and ceilings are smooth surfaces. Our solutions come from experience and hotel standards where expectations of quality and durability are key!
- We do not offer “bare” solutions. All DMD products are fully fitted products with no hidden charges. Our houses are designed as year-round objects with heating, ventilation, full electrical installation and plumbing. They include a fully furnished bathroom (as shown in the photo materials). Optionally they can be equipped with a energy recovery system, air conditioning and modern heating systems integrated with photovoltaic panels that make the building energetically self-sufficient.