

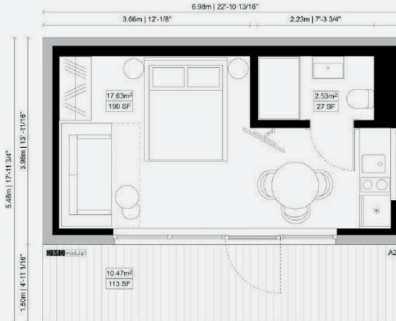
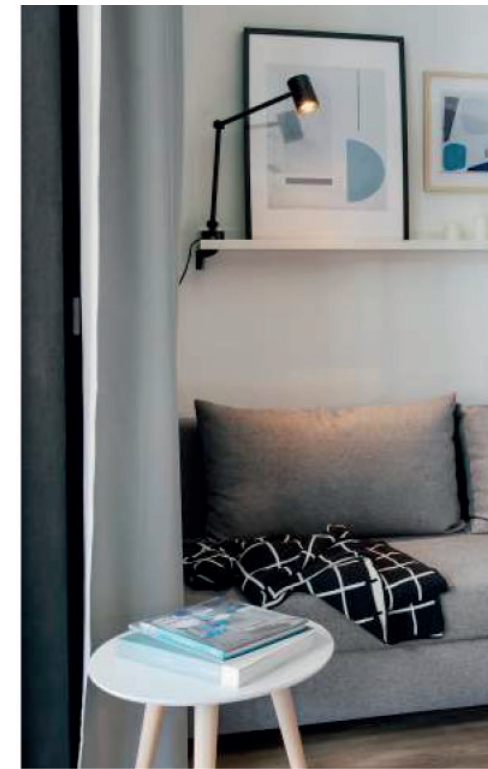


modular holiday house
A28aN



SMART HOUSE A28AN

Dimensions	3,98 x 6,98 x 3,93 m
Building Area (m2)	27,78 m ²
Useable area	20,16 m ²



room	area m ²
living room with kitchenette	17,63 m ²
bathroom	2,53 m ²
usable area	20,16 m ²
- total area	

A28aN

Dimensions
3,98 x 6,98 x 3,93 m

Building area
27,78 m²

Internal area
20,16 m²



2+2



1



1



1



shed
roof



facade:
-wood
-steel



all-year
product



1

Smart House A28aN is the smallest of all our houses, designed in modular technology and based on one-frame. Shed roof and walls covered with sheet metal facade panels complemented with wood board detail. The model is a combination of hotel room solutions and leisure houses. Functionally arranged space where day zone and night zone interfuse each other is open to daylight and landscape due to the panorama window in one of the facade walls. **This is a house designed for those who value the view on the surrounding space.**



Why the Smart Living series?:

1. Short production period

High degree of prefabrication – 99% of the work is carried out in the factory –which means a fully finished and furnished unit delivered to you within a few weeks (between 3 and 5 weeks onto site).

2. Mobility and ease of assembly

The mobility of the product is its additional advantage. Our modular system and steel structure make the unit easy to disassemble and move it to another location, making it fully relocatable. That allows you to use the unit in various locations. Each unit is equipped with transport hooks that can be used repeatedly. Assembly of the modules is very easy and takes only a few hours. You can do it by yourself (with our technical support) or leave it to DMD.

3. Durability of the structure

cold-formed steel, type S355, of indisputable durability.

4. Ecological parameters

Our products are environmentally friendly and energy efficient. We use building materials production and use of which does not affect the environment- for example MFP boards that do not emit formaldehydes or mineral wool as thermal insulation. The roof is covered with recyclable steel sheets used also on the facades along with natural wood. Our products ensure healthy living conditions and comfort of use.

We change the way of thinking about building real estate.

5. Design and Aesthetic cohesion

Our products are designed by the team of experienced architects. The units allow the completion of aesthetically coherent housing complexes based on various products from our portfolio.

6. Guarantee of quality

We select durable, high-quality materials, which is reflected by our warranty conditions (with an option of further extension).

- We do not sell visualisations: we sell proven, tested, realised objects!
- We only use plasterboard taped and filled to all of our product offering the highest standard of finishing, HDF board and other wood-based boards are not part of our finished design.
- We do not cover the connections between ceilings and walls with mouldings – all connections are invisible – walls and ceilings are smooth surfaces. Our solutions come from experience and hotel standards where expectations of quality and durability are key!
- We do not offer “bare” solutions. All DMD products are fully fitted products with no hidden charges. Our houses are designed as year-round objects with heating, ventilation, full electrical installation and plumbing. They include a fully furnished bathroom (as shown in the photo materials). Optionally they can be equipped with a energy recovery system, air conditioning and modern heating systems integrated with photovoltaic panels that make the building energetically self-sufficient.